

June

update



Rail Safety & Standards Board

Welcome to the June 2007 edition of UPDATE, a monthly e-newsletter produced by Rail Safety and Standards Board (RSSB), in support of the rail industry's efforts to address rail related community safety issues.

This month's issue includes an article on the publication of RSSB's Annual Safety Performance Report (ASPR). The ASPR gives details of the safety performance of the British mainline railway system for the calendar year 2006 and some of the highlights from the report are revealed later on in the newsletter.

UPDATE is a tool for promoting awareness of current initiatives and encouraging the adoption of good practice. If you have any stories to share about initiatives or events in your area, or would like to provide feedback on this issue, please contact: community.safety@rssb.co.uk or 020 7904 7674

I hope you enjoy this issue of UPDATE

Kerry Taylor, Editor.

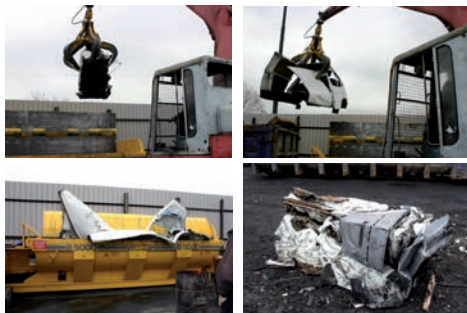
► Enterprising community involvement

Midland Mainline's well established citizenship programme 'momentum' recently inspired local children to get involved in a workshop as part of Enterprise Week. A group of 14 year old budding entrepreneurs from Derby Grammar School came up with their own enterprise and had to pitch their ideas to fellow pupils – Dragon's Den style. The school's Head of Citizenship, Careers and Curriculum, Moya Weighill said collaborating with Midland Mainline was something special and the children particularly enjoyed presenting their ideas to the rest of the class. Sponsored by Midland Mainline, 'momentum' is a bespoke education programme written by educational specialists, which consists of teaching resources, practical activities and visual aids. The programme focuses on Safety in Transport, Enterprise, Waste Management, Disability and Food & Nutrition. Midland Mainline says it is proud to be giving something back to the community.

For more information visit: <http://www.midlandmainline.com>

► Crime vehicles to the rescue

Vehicles that are used in crimes are being supplied by the British Transport Police to a South London scrap dealer who is donating them to the local emergency services to test new equipment and carry out mock rescue exercises before they are scrapped. Scrap yard dealer Alan Lee has been working with the emergency services for several years and now with BTP is helping provide a 'positive end' for crime



NATIONAL RAILWAY CRIME HOTLINE 0800 40 50 40



updateupdateupdateupdateupdateup

vehicles before they are crushed. The white van shown being crushed was used by thieves recently jailed for 17 years for a cable robbery at London Bridge last July.

► Wrestling with rail safety

A wrestling club in Darlington set up with funding from Network Rail's No Messin'! campaign is going from strength to strength with students entering a national school wrestling competition this month. Following a No Messin'! event last year, Eastbourne School contacted Network Rail to ask for support and the company funded a set of mats to help get the club off the ground. A representative from the British Wrestling Federation says the club has touched the lives of local youngsters who before only ever thought of 'hanging around' either in or out of school. Schools now recognise that wrestling as an excellent diversionary activity aimed at keeping their pupils off railway tracks. For more information visit: <http://www.networkrailmediacentre.co.uk>

► RSSB's Annual Safety Performance Report

RSSB's 2006 Annual Safety Performance Report (ASPR) reviews our industry's progress against the key areas identified in the railway strategic safety plan. It examines in detail the range of risk experienced by passengers, the railway workforce and members of the public, before considering those issues that affect us all – namely train accidents, personal security, risk at level crossings and risk at stations.

The main points from 2006 are as follows:

- For a second consecutive year, there were no passenger or workforce fatalities in train accidents.
- Two passengers died as a result of assault. A further six passengers died in accidents at stations; alcohol was a contributory factor in three cases. The total number of passenger fatalities was similar to other recent years.
- Two members of the workforce died in accidents in the trackside environment.
- The trend in workforce "major injuries" showed significant improvement, with a reduction of 24 per cent from 2005, continuing the downward trend seen since the 2004 peak.
- The number of potentially higher risk train accidents was 6 per cent lower than 2005.
- At the end of 2006, the risk from signals passed at danger (SPADs) stood at less than 10 per cent of its March 2001 level.
- For the first time since 1997, there were no accidental fatalities involving vehicle drivers at level crossings.
- Five pedestrians died at level crossings. Six members of the public died in falls from overbridges. One vehicle driver died when a train struck his car on the former level crossing at Copmanthorpe in North Yorkshire.
- 288 people died as a result of trespass or suicide - a significant rise compared with previous recent years.



updateupdateupdateupdateupdateup

2006 has been a generally good year for safety performance, although the adverse trends in trespass fatalities and suicides underline the need for all community safety stakeholders in rail to work in partnership to tackle the issues behind the figures.

The latest edition of the ASPR includes some structural changes. The main one involves the assimilation of the Annual Recommendations Report, which reflects the incorporation of the RSSB Formal Inquiries team into the Risk & Safety Intelligence department and the creation of the Rail Accident Investigation Branch. A chapter has also been provided to deal with safety in the context of sustainable development. This illustrates the balances between environmental, social and economic conditions that we can expect to become increasingly vital in the years ahead, and which are likely to have safety-related impacts. The final chapter, European developments, looks at progress in Europe and its implications for rail safety management in Britain. It also provides an overview of the new Railway and Other Guided Transport Systems (Safety) Regulations 2006 (ROGS) and presents an outline of the developments in the Technical Specifications for Interoperability along with the work of the European Rail Agency regarding common approaches to safety targets, indicators and methods.

Full details can be found in the final report on the RSSB website: www.rssb.co.uk

► Safety Message on Track

A safety awareness train ride from Bangor to Holyhead hosted by BTP and Arriva Trains Wales for a local brownie pack proved such a success that the brownies designed and produced posters for the organiser - BTP Community Partnership Co-ordinator Bill Rogerson. The winning posters were all awarded family rail tickets for a day trip anywhere on the network. Tawny Owl, Angela Baird said, "The girls had a thoroughly enjoyable and informative trip and picked up all the key messages given by Bill along the way".

For further details visit: <http://www.arrivatrainswales.co.uk>



► Routing out rail crime

With passenger journeys increasing by 1.5 million to 76 million last year, Northern Ireland Railways is responding to growing passenger confidence in the network by taking a zero tolerance position on rail crime. Last year the train operator had 142 successful prosecutions for various offences and imposed fines totalling £30,000. The company offers a cash incentive of



updateupdateupdateupdateupdateup

£1,000 to any member of the public who witnesses a rail crime and is prepared to give evidence in court resulting in a conviction. Fines for failure to observe a warning system were over £14,500 – the highest incident category.

For more information visit: <http://www.translink.co.uk>

► On-going misuse of level crossings

In Northern Ireland, as in the rest of the UK, lives are still being put at risk at level crossings despite an intensive on-going campaign by NI Railways. The company has a particular problem with user worked rail crossings with individuals failing to secure gates properly and use the stand-by telephone. Ian Morrow, NI Railways Infrastructure, Safety, Quality and Environmental Manager explains, “In Northern Ireland we have about 200 private or user-worked crossings and we are receiving on-going reports of people taking risks, not notifying signal operators before crossing or failing to close the gates after crossing. We have liaised with Network Rail to share ideas and resources in a bid to eliminate accidents. We have also recently produced a new booklet entitled ‘The Safe Use of User Worked Crossings’ which highlights the dangers and safety procedures and provides emergency information and contact details. We are distributing the booklet across Northern Ireland to the farming community”. For more information contact: Keelin Haughey, Morrow Communications on 028 9039 3837 email

k.haughey@morrowcommunications.com Website: <http://www.translink.co.uk>

In the rest of the UK, level crossing incidents are still making the news. As a level crossing barrier closed in Downham Market, Norfolk, a driver ignored the red lights, overtook another vehicle and zigzagged around the barrier – an act which resulted in Norwich Crown Court serving a £1,000 fine, court costs of £1,100 and a 12 month driving ban on 49-year-old Lorraine Hodgkinson from Outwell in Cambridgeshire.

► Stepped up security patrols show value of partnerships

TransPennine Express is sponsoring two BTP Community Support Officers (PCSO's) to carry out high visibility patrols on its trains. This is the first time a transport organisation has funded BTP officers on trains in the North Eastern area. The officers will provide a visible deterrent to antisocial behaviour and a reassuring presence for passengers. The company says the vast majority of rail journeys are made without incident and it is the small antisocial element that it is keen to clamp down on.

For more information visit: <http://www.btp.presscentre.com>

Another north eastern transport operator is also stepping up security patrols. Passengers travelling on the Tyne and Wear Metro network are seeing extra security staff located at four key interchanges on the network seven days a week until midnight. The two-man teams are inspecting tickets at barriers and on trains acting as a deterrent to any troublemakers and are



updateupdateupdateupdateupdateup

working alongside Travel Support Officers who patrol on board trains at night. Metro say the security staff will work an extra 500 hours a week making it harder for troublemakers and fare cheats.

For more information visit: <http://www.nexus.org.uk>

Following a successful pilot scheme earlier this year two BTP officers are now patrolling Glasgow's Subway metro system on a permanent daily basis. During the three month trial the officers dealt with a range of police activities including crowd control when the metro is particularly busy such as on match days.

For more information visit: <http://www.spt.co.uk>

Since six community support officers (CSOs) began patrolling rural rail services in Pontypridd, Wales six months ago transport police say there has been a 35 per cent drop in rail incidents. The team have held almost 1,000 rail-based day and evening patrols and have tackled one of the network's biggest problem areas which is drunken youths congregating late at night at stations with no intention of travelling. Since the initiative began, officers have ejected 460 people from stations. Earlier this year watchdog Passenger Focus said rail passengers' concerns about safety at stations is higher in Wales than in the rest of the UK. RMT warned that violence on the railways in Wales was, they claimed, reaching 'civil unrest' proportions. The CSOs were bought in to help tackle this issue with very positive results.

For more information visit: <http://news.bbc.co.uk>

► Security marking service

A free security marking service for passengers' possessions took place recently at London Marylebone station. BTP officers were offering a UV marking service for valuable items such as laptops, mobiles and cameras. The owner's name and address is written using a UV pen which can be seen under a UV light.

Each marked item carries a security marked sticker as a warning to potential thieves. Crime Reduction Days are held regularly at main stations to highlight what rail users themselves can do to help reduce crime.

For more information visit: <http://www.chilternrailways.co.uk>



► Safer stations

Good news for Southern – Last month Southern had five more stations accredited with Secure Station status. The stations are located on the Uckfield/East Grinstead line in East Sussex. The Secure Station Scheme is managed by the Department for Transport with BTP.



updateupdateupdateupdateupdateup

► Community works together on station facelift

Montpelier railway station on Bristol’s Severn Beach line is getting a major facelift but, rather than give the station the usual lick of paint, local First Great Western Manager Mike Holmes has adopted a more creative approach by involving the whole local community.

Mike explains, “Montpelier station has long been the target for graffiti so rather than giving the vandals a new canvas to work on we have been working with a Bristol graffiti artist to develop a well designed and credible piece of work with a strong local feel”. Work started on the mural last month with local schools and businesses getting involved in brightening up the station by repainting all areas of the station and re-launching the station garden. Bristol City Council is also playing its part by donating shrubs for the flowerbed. If it proves successful the company will consider adopting this community based approach for other suitable stations.

For more information visit: <http://www.firstgreatwestern.co.uk>

► Dates For Your Diary – This Month:

7 June

ACORP Conference: “Where next for community rail?”

For more details: <http://www.acorp.uk.com>

19 – 21 June

National Community Safety Network’s 2nd National Convention for Safer Communities

The 2007 Convention is aimed at all those who work within the field of Safer Communities. The programme will be developed and delivered by a multi-agency group, looking at the latest policies and thinking on a range of cost-cutting ideas.

For more details: <http://www.community-safety.net>

► Future Events:

The No Messin! 2007 campaign is coming to a town near you! Please see details of dates and locations below:

Dates	Town
4th / 5th July	Alloa
10th / 11th July	Glasgow
25th / 26th July	Worthing
1st August	Strood
2nd August	Gillingham
7th/ 8th August	Sheffield

Dates	Town
9th / 10th August	Bristol
13th/14th August	Derby
15th /16th August	Chelmsford
20th / 21st August	Middlesborough
23rd / 24th August	Warrington

For more information on the campaign, please contact Ian Chapman, Network Rail;

Ian.Chapman2@networkrail.co.uk