

# Summary of Safety Performance



Rail Safety & Standards Board

## December 2008

### Fatalities

There were no reported workforce fatalities during December. However, there was one passenger fatality and nine public accidental trespass fatalities.

On 23 December, an elderly male fell on the escalator at Birmingham New Street station (London North West (LNW)). The man died from his injuries the next day.

There were also 10 suspected suicides. These figures are subject to change as more information (eg coroners' verdicts) becomes available.

### Reportable train accidents: collisions, derailments and trains striking road vehicles

On 4 December, a passenger train struck a road vehicle at Winchelsea automatic open crossing locally monitored (AOCL) (South East). The train did not derail. The road vehicle occupant suffered a minor injury and there were no reported injuries on board the train.

On 6 December, a road rail machine derailed in a possession at Winsford (LNW). Two contractors were thrown forward in the vehicle and sustained minor injuries.

On 16 December, a freight train derailed at Fiddlers Ferry (LNW). The driver was unaware that the rear bogies had derailed and continued for a mile before coming to a halt. There were no reported injuries.

On 16 December, a passenger train detached units to form two passenger trains at Faversham (South East). The leading passenger train rolled back causing a collision. There were no reported injuries.

On 16 December, a passenger train detached the two rear units at Salisbury (South East). The remaining unit scheduled to go forward as a passenger train, reversed and collided with the empty coaching stock train. There were no reported injuries.

On 18 December, a car encroached the railway and was struck by a passenger train at North Rode (LNW). The road vehicle was then struck by another passenger train travelling in the opposite direction. No injuries were reported on either train, both of which remained upright. The second train derailed, by the rear bogie on the rear coach.

On 20 December, a passenger train struck the rear end of an unknown road vehicle at Sandways open crossing (Western). The road vehicle continued on its journey after the collision. There were no reported injuries on board the train.

### Precursors

During December 2008, there were 25 category A SPADs. This brings the yearly total for 2008 to 327, which compares with 318 in 2007.

Of the 25 category A SPADs in December, seven were risk ranked potentially significant (16-19) and none were ranked as potentially severe (20+).

During December 2008, there were 91 category B, seven category C and one category D SPADs, giving a total of 99. There were 107 such SPADs in December 2007.

There were 39 broken rails in December. The yearly total is 170. This is 11% lower than the total in 2007.

**Latest safety performance reports: available on [www.rssb.co.uk/safety/spr/spreports.asp](http://www.rssb.co.uk/safety/spr/spreports.asp) or <http://www.opsweb.co.uk/>**

***There is a feedback form on the Rail Safety and Standards Board website; we would appreciate your comments on all our outputs.***

*The Safety Intelligence Team can help with safety data queries; please do not hesitate to contact us.*

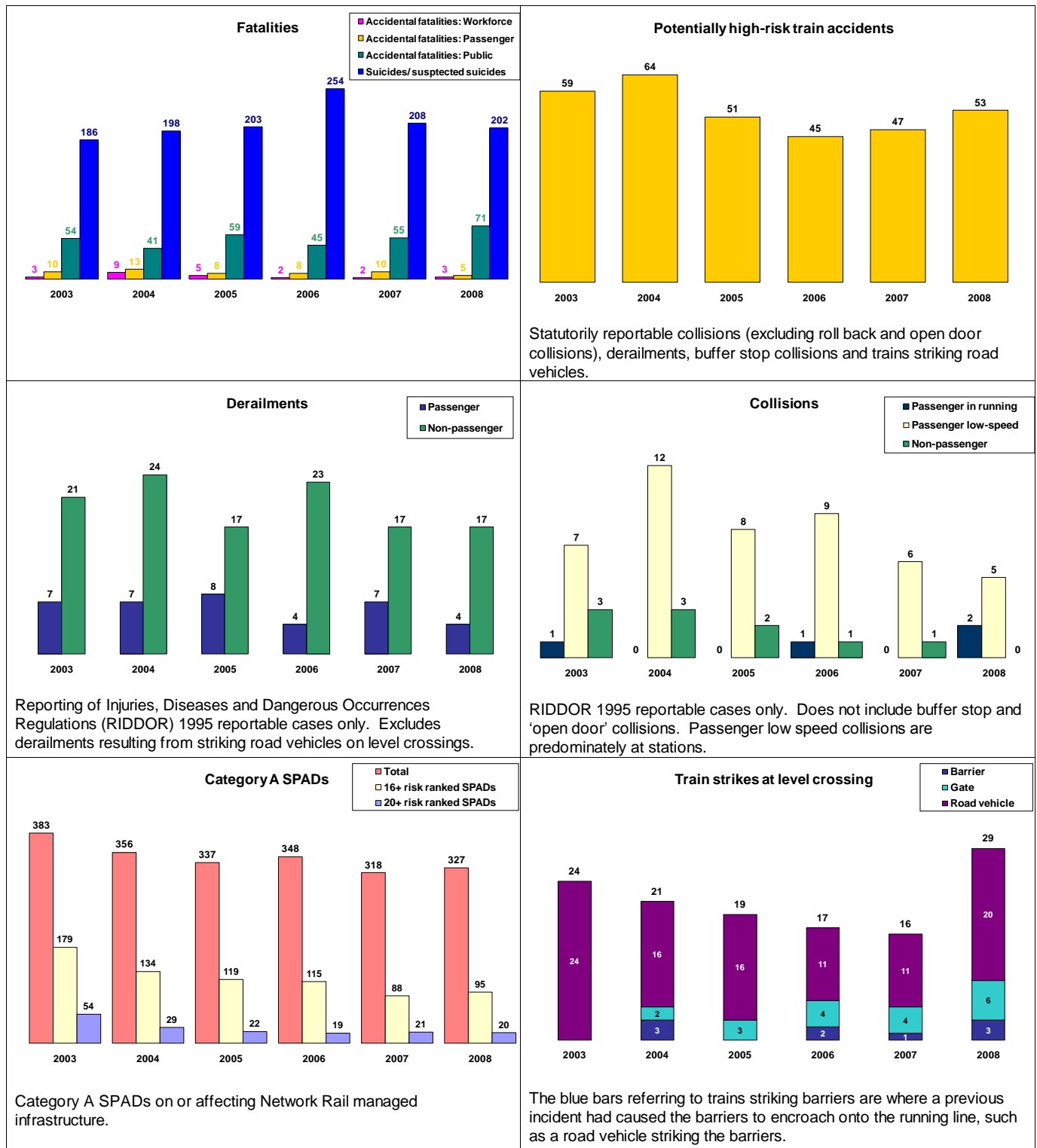
# Summary of Safety Performance



Rail Safety & Standards Board

With a full year's worth of data now available for 2008 it can be seen that, when compared to 2007, improvements have been recorded in passenger fatalities and passenger train derailments. At five, the number of passenger fatalities is potentially the lowest number ever recorded (to be confirmed). Performance has been similar to 2007 in the areas of non-passenger train derailments, collisions, workforce fatalities and suicides.

However, increases have been recorded in the areas of public accidental fatalities, SPADs and PHRTAs (potentially higher-risk train accidents) with the total number of train strikes at level crossings being nearly double the number recorded in 2007.



The Safety Intelligence Team can help with safety data queries; please do not hesitate to contact us.