

Summary of Safety Performance



Rail Safety & Standards Board

November 2008

Fatalities

There were no reported workforce or passenger fatalities during November. However, there were eight public accidental fatalities, five of which involved trespassing.

On 22 November, two pedestrians (a grandmother and her seven-year-old grandson) were struck on Bayles & Wylies footpath crossing (London North East).

On 3 November, a road vehicle was struck at Wraysholme level crossing, killing the driver of the road vehicle (London North West (LNW)). (See below for details.)

There were also 21 suspected suicides. These figures are subject to change as more information (eg coroners' verdicts) becomes available.

Reportable train accidents: collisions, derailments and trains striking road vehicles

On 1 November, an on-track machine derailed within a possession at Rugeley (LNW). The operator injured his knee in the incident. There were no other reported injuries.

On 3 November, a passenger train struck a car on Wraysholme AOCL crossing, killing the driver of the road vehicle (LNW). The level crossing was working correctly at the time. The train did not derail. There were no other reported injuries. Rail Accident Investigation Branch has launched an investigation into the incident. A collision occurred at the same crossing earlier this year.

On 6 November, a freight train derailed at Bescot Junction (LNW). There were no reported injuries.

On 10 November, a freight train derailed at low speed on trap points at East Somerset Junction (Western). There were no reported injuries. The RAIB is carrying out an investigation.

On 11 November, a freight train derailed on hand points at Gresty Green (LNW). The overhead line was struck and knocked foul of the running line. There were no reported injuries.

On 12 November, a passenger train struck a van at Glasses user-worked crossing (Western). There were no reported passenger injuries; however, the train driver suffered shock. The train did not derail.

On 14 November, a passenger train derailed at Bognor Regis (South East). The train was derailed on incorrectly set hand points. There were no reported injuries.

On 18 November, a passenger train derailed after striking a landslide at Stromeferry (Scotland). There were no reported injuries.

Precursors

During November 2008, there were 29 category A SPADs. This brings the 2008 total (to the end of November) to 302, which compares with 295 up to the same point in 2007.

Of the 29 category A SPADs in November, six were risk ranked potentially significant (16-19) and three were ranked as potentially severe (20+).

During November 2008, there were 99 category B, 16 category C and no category D SPADs, giving a total of 115. There were 122 such SPADs in November 2007.

There were 21 broken rails in November. The yearly total is 122. This is 27% lower than the total up to the same period in 2007.

Latest safety performance reports: available on www.rssb.co.uk/safety/spr/spreports.asp or <http://www.opsweb.co.uk/>

There is a feedback form on the Rail Safety and Standards Board website; we would appreciate your comments on all our outputs.

The Safety Intelligence Team can help with safety data queries; please do not hesitate to contact us.

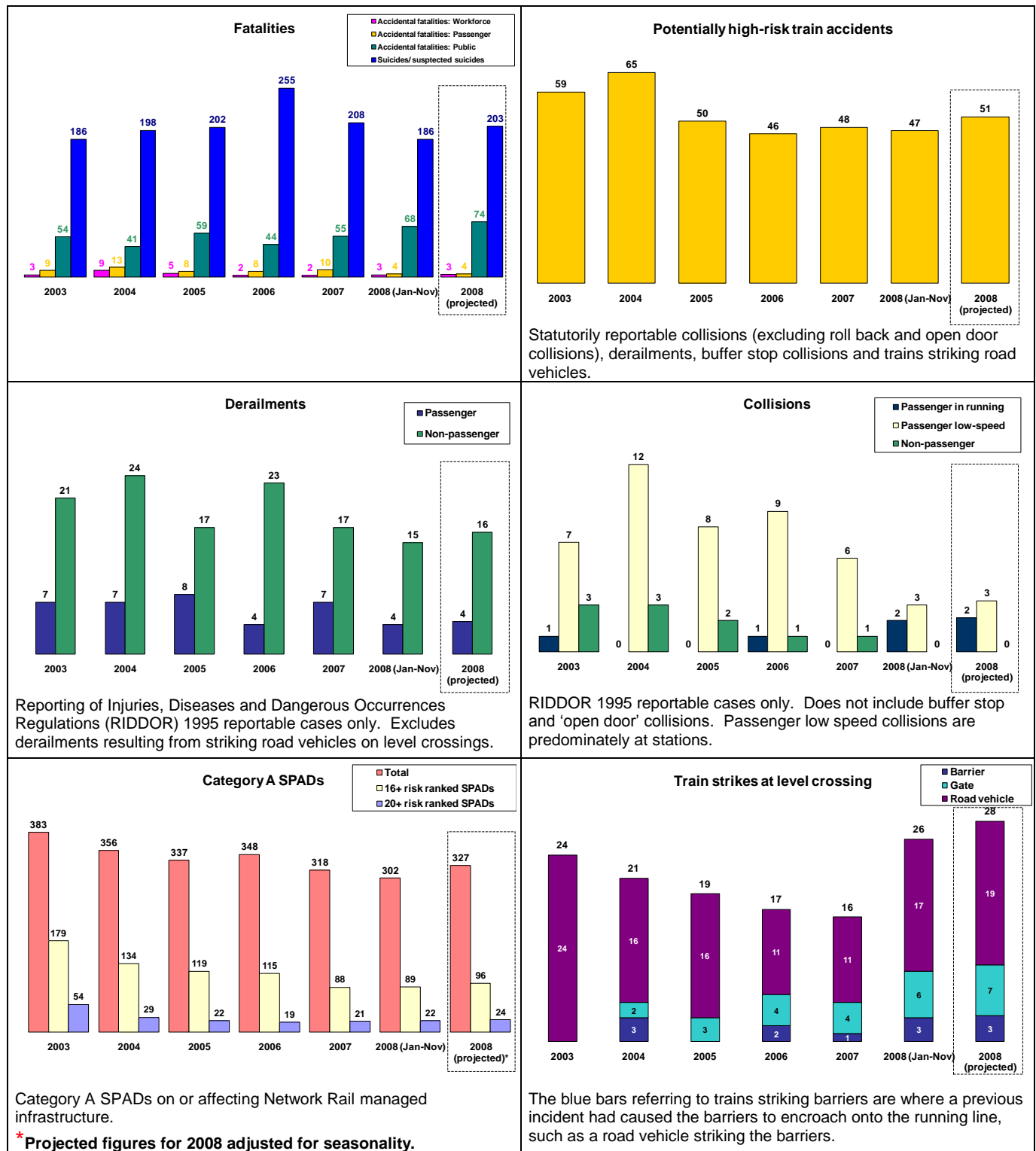
Summary of Safety Performance



Rail Safety & Standards Board

With eleven months of data available for 2008, we have projected figures to the end of the year. The projected number of low-speed passenger and non-passenger train collisions and passenger train derailments are showing potential reductions.

However, accidental public fatalities, SPADs and PHRTAs (potentially higher-risk train accidents) are showing small potential increases and the total number of train strikes at level crossings to date significantly exceeds the total for 2007.



The Safety Intelligence Team can help with safety data queries; please do not hesitate to contact us.