



Key Charts

from the Annual Safety
Performance Report 2015/16

1.69

billion passenger
journeys, a 2%
increase on 2014/15

0

Passengers or
workforce fatalities in
train accidents for the
ninth consecutive year

8

passenger fatalities in
individual incidents,
all at stations

0

workforce fatalities

289

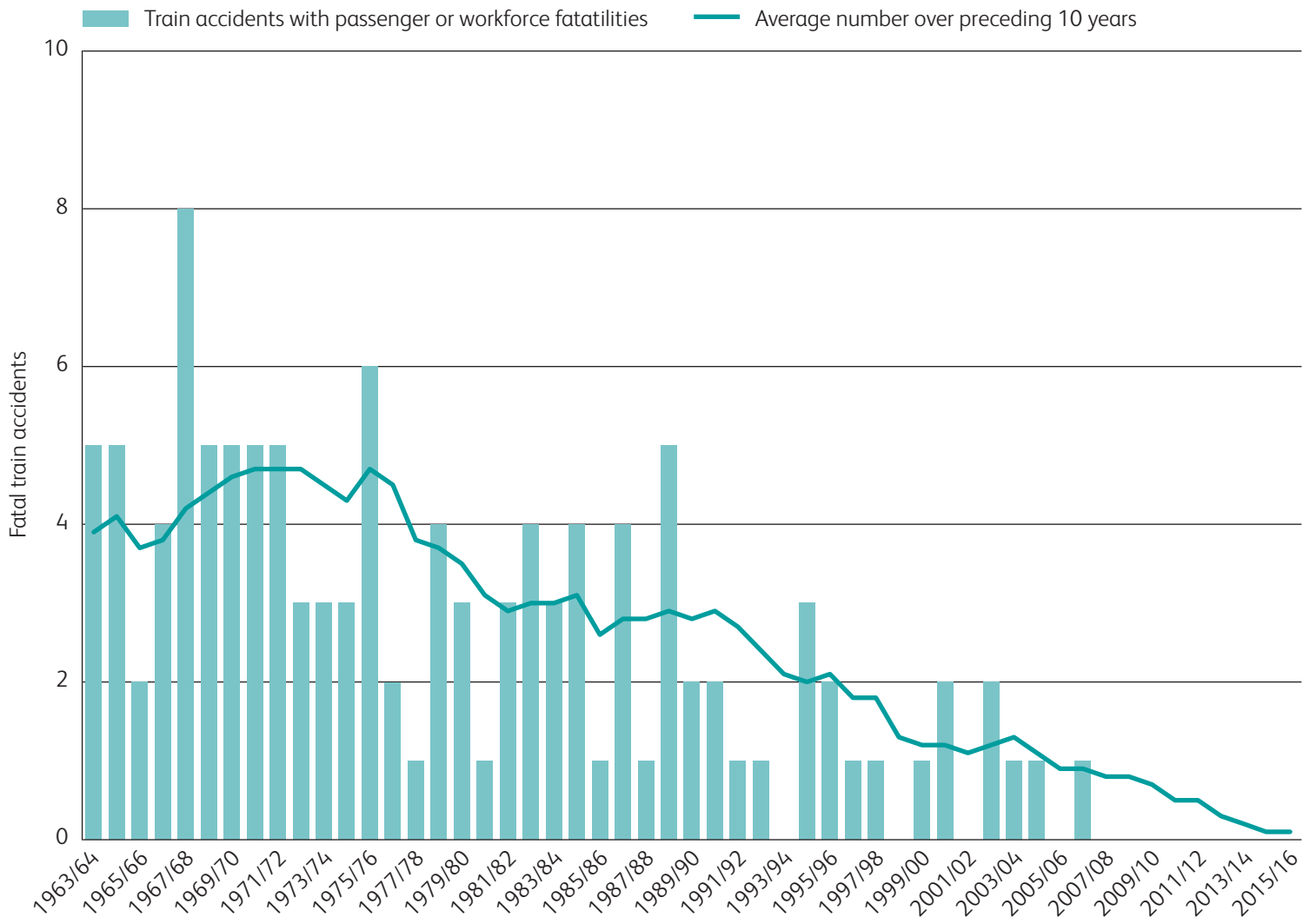
Public fatalities -
252 were suicides or suspected
suicides
30 were trespassers
3 occurred at level crossings
4 died from other causes

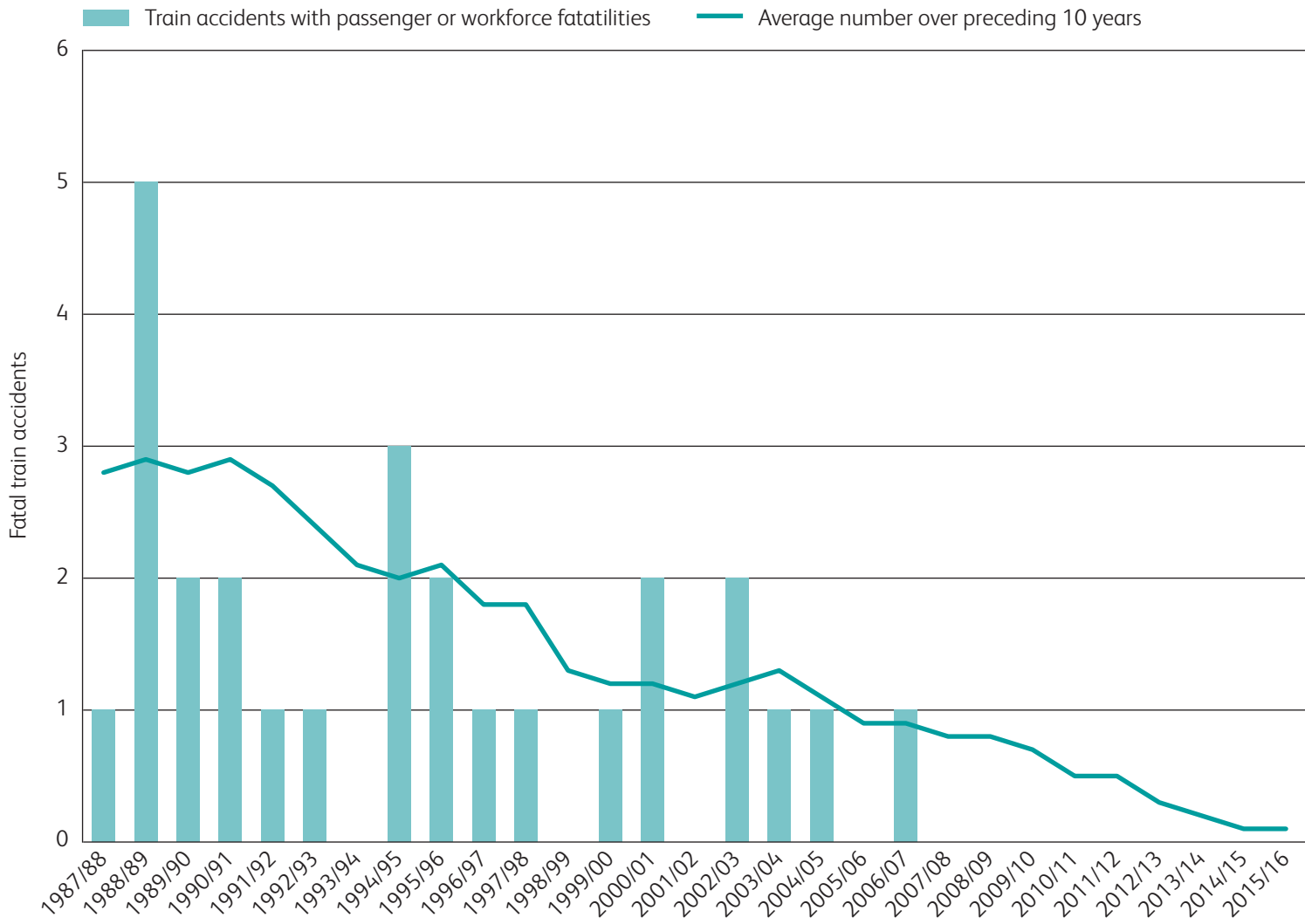
288

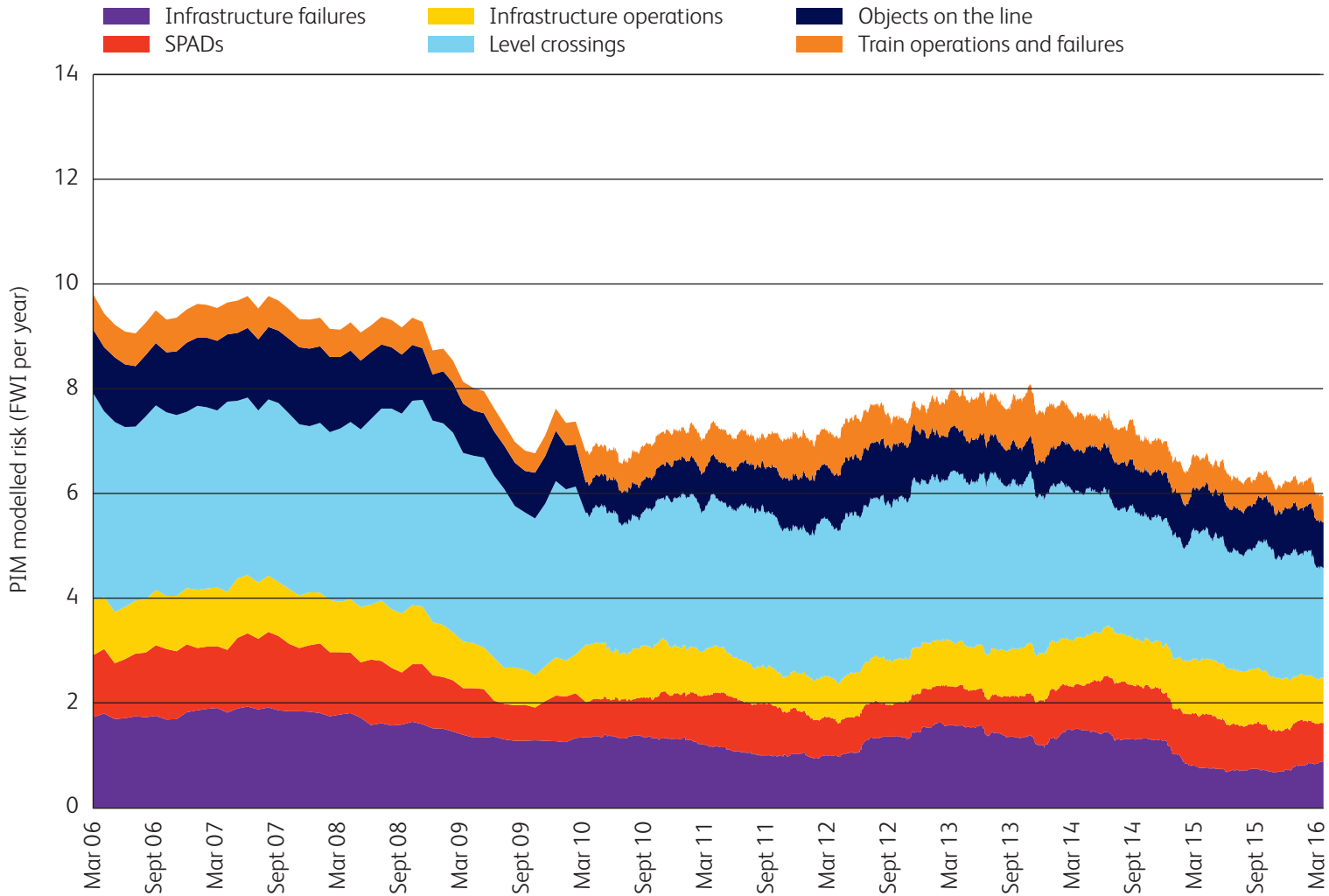
major injuries to
passengers

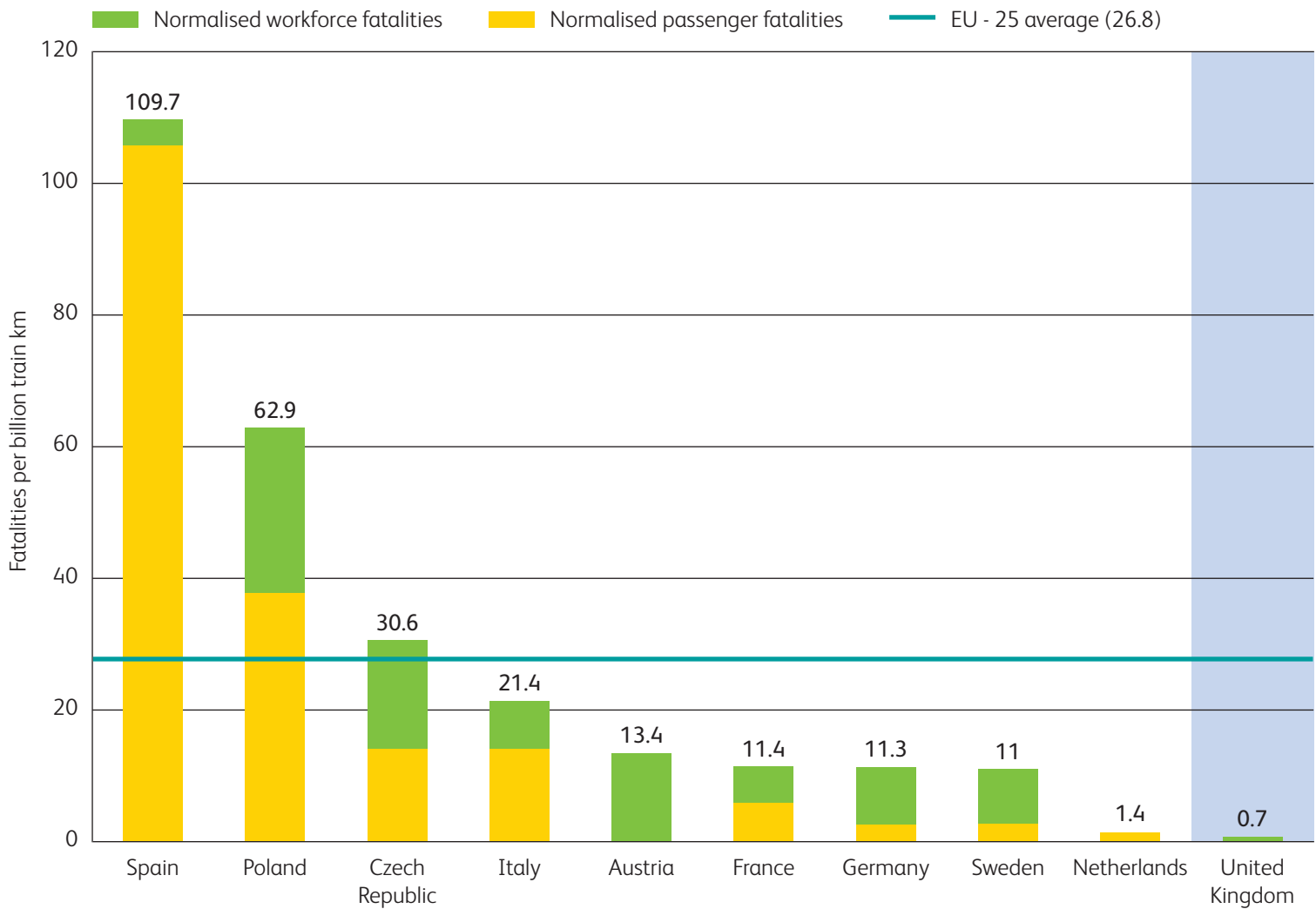
157

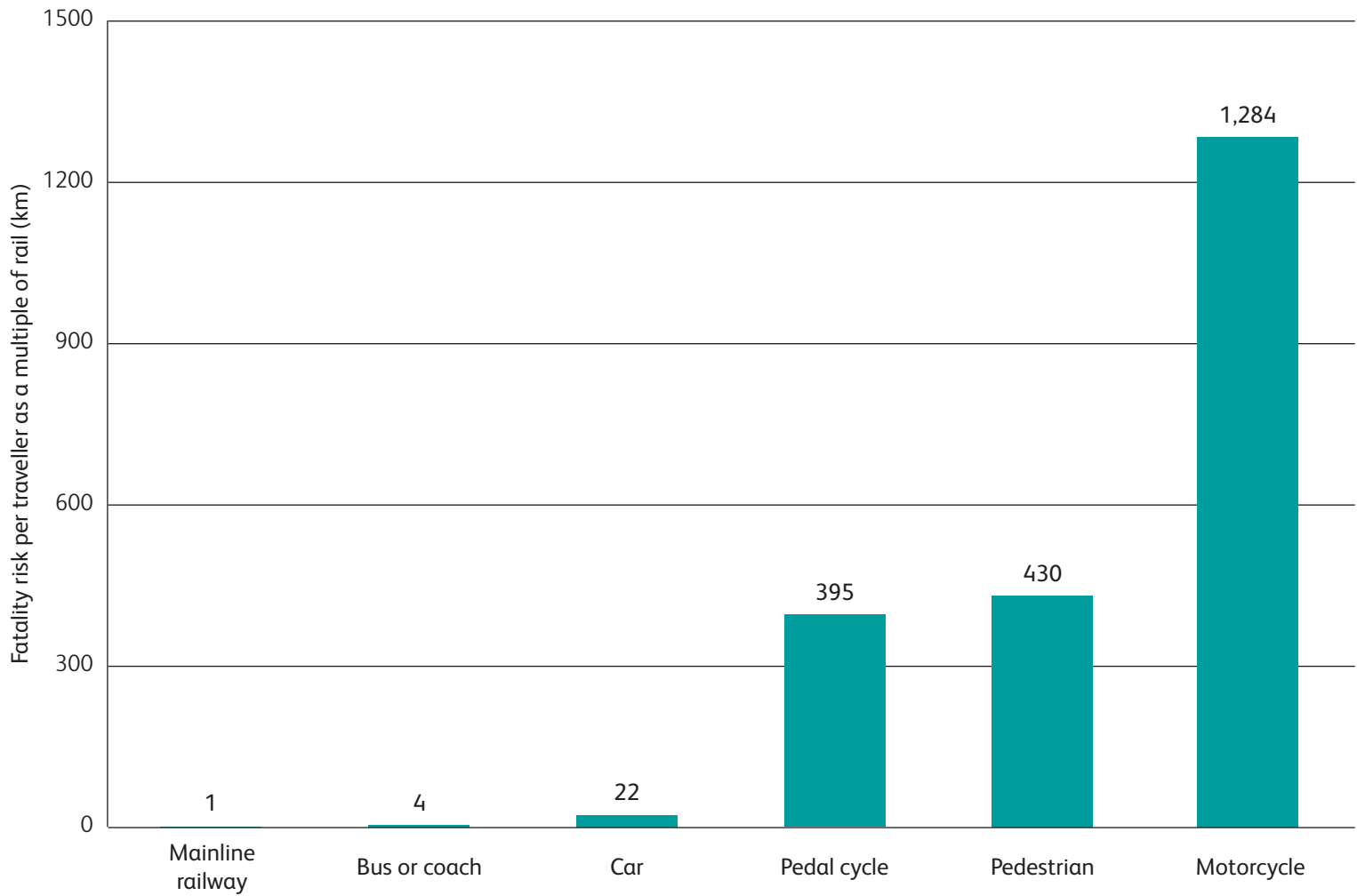
major injuries to
members of the
workforce











- Trains striking road vehicles at level crossings
- Trains striking buffer stops
- Train struck by large falling object
- Train derailments (excludes striking road vehicles on level crossings)
- Trains running into road vehicles not a level crossings & no derailment
- Collisions between trains (excluding roll backs)

